

# Construction site camera and time-lapse



Live view and time-lapse



Simple and non-destructive assembly

For construction management and architects a building site documentation is an essential tool to ensure having a complete documentation of the whole construction progress. With 1000eyes you realize a professional construction documentation, regardless of whether the project lasts four weeks or four years. High-resolution Axis cameras ensure perfect picture quality, regardless of the time of day or season.

High quality HDTV cameras from Axis Communications are mounted on the construction site. They will connect automatically (thanks 1000eyes® technology within the camera) to the central server of 1000eyes on the Internet using a secure connection via DSL or 3G/4G.

Only a 110V/230V power supply and an Internet connection (DSL or mobile network 3G/4G) is required. There is no need for a PC or recording equipment on site.

The password protected builders login at [www.1000eyes.net](http://www.1000eyes.net) offers you live access to the camera and to the recording archive. The live access to the high-resolution pan, tilt and zoomable cameras and the recording archive is realized via web browser. The cameras also transmits at configurable intervals, e.g. every 15 minutes, an image of the current situation, also available in HDTV resolution, to the secure recording archive in the 1000eyes data center. Continuous recording for monitoring purposes at 10 frames per second is available optionally.

You will receive a link to embed the live stream of the camera and the time-lapse of any previous recordings on your own website. Also a geo-reference for Google Earth is available, to give the viewer an overview of the location of the construction site. You need no programming skills (link, iFrame).

Access to the live view and recording archive for iPhone / iPad or Android smartphone / tablet is optionally possible via app and browser - and also the access to the time-lapse.

On project completion or at the end of the license term, all recordings are exported as download and sent to the client.

With several thousand installations of network video solutions the 1000eyes GmbH has the know-how for optimal implementation of web-based construction documentation.

In addition to cameras, no additional hardware required

Access via webbrowser

Multiple sites manageable via one interface

Live images can be embedded in a webpage

Progress documentation and time-lapse as video

Cameras can also be used via 3G / 4G

Permanent function control

Export of your recordings as download after project completion

Optional access via iPhone/iPad and Android devices



# Technical Daten / Features

## Construction site docu 1-Camera License for 1 Year

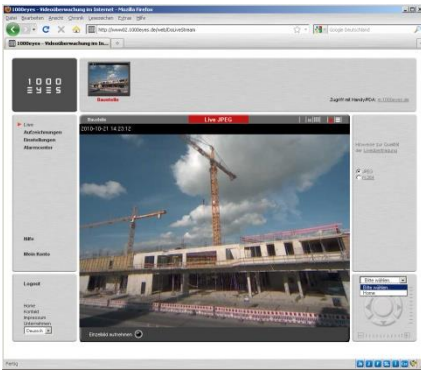
- Password-protected builders login at [www.1000eyes.net](http://www.1000eyes.net)
- Live access to the camera. PTZ cameras can be controlled comfortable via the builders login
- Recording archive in highly secure data center for documentation, with convenient search functions and automatic backup. Recording interval: 15 minutes, shorter interval on request
- Export of your recordings as download on the project end or end of license term
- Backup and traffic in the German 1000eyes high-security data center is included
- Permanent function control of the camera, e-mail notice
- Provision of the camera image for integration into your own website, updated once per second, depending on the existing Internet connection on camera site
- Provision of a time-lapse over the recorded images for integration into your own website, ideal for displaying the progress of the construction site, automatic rendering of the time-lapse within the data center of 1000eyes
- Large number of concurrent viewers possible (by multiplexing within the data center)
- Provision of a working HTML page for integration (iframe) within your own website, no programming knowledge required

## System requirements

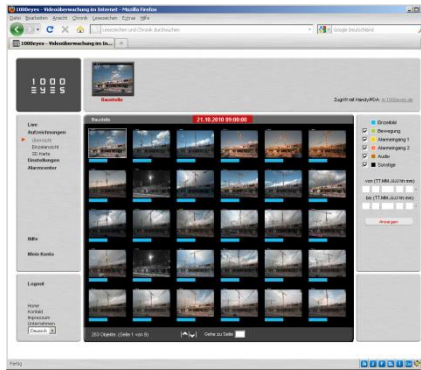
- Compatible network camera or video encoder
- Landline Broadband Internet connection (without Proxy- / Sockserver), e.g. DSL 2000 or faster. Flat rate (data plan) recommended. DSL or 3G/4G
- Free Ethernet/LAN-Port on Router or Hub/Switch.
- No portforwarding/NAT or DynDNS required!
- Current desktop web browser with Adobe Flash Player for the viewing the lapse
- Access via iPhone/iPad and Android Smartphone/Tablet is optional

Live-Demo: [www.1000eyes.de/bau](http://www.1000eyes.de/bau)

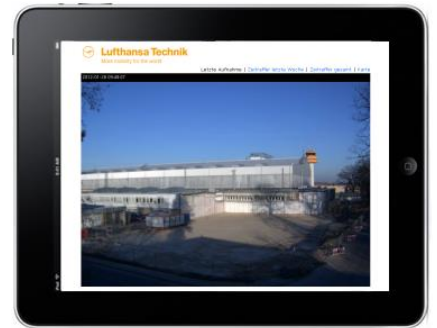
## Samples



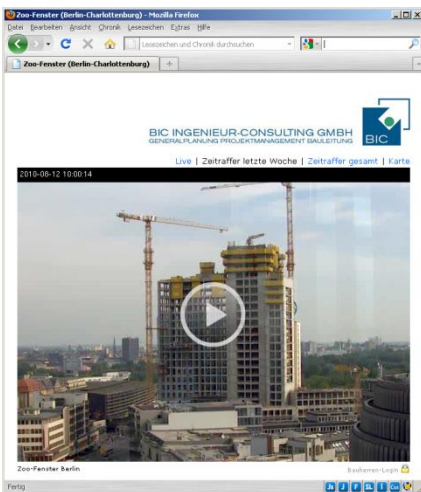
Builders login: Live view



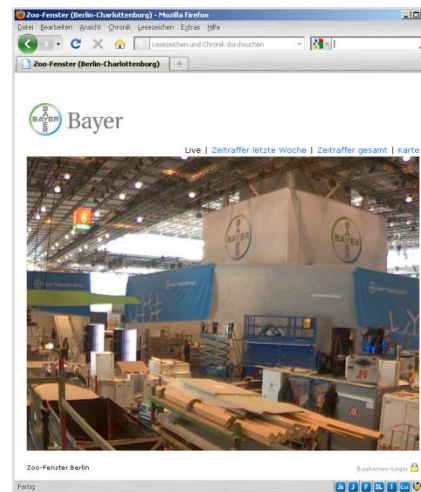
Builders login: Archiv view



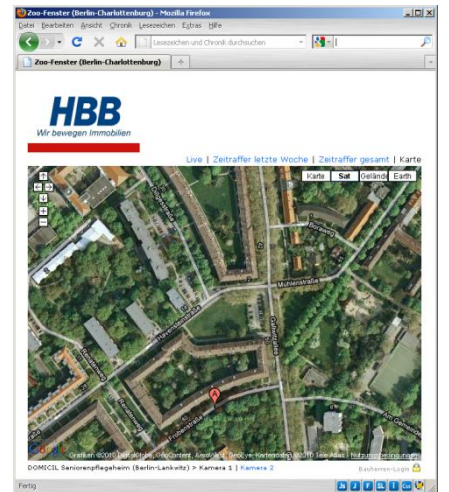
Optional access via iPad



Website integration: Time-lapse



Website integration: Live view



Website integration: Google Earth Reference

For more information and the latest datasheet: [www.1000eyes.de/bau](http://www.1000eyes.de/bau)